

**ALL INBOUND STUDENTS
ARE REQUIRED TO CALL
THE ADMISSIONS FLIGHT
SDO OFFICE AND RUN
THE COVID SCREENING
QUESTIONNAIRE BEFORE
ENTERING ANY BASE
FACILITIES**

(830) 298-5211

LAUGHLIN AFB COVID GUIDANCE

Current as of 8 December 2020

For most cases, students arriving from outside the state of Texas on official travel can expect to be placed into a 14 day self-monitoring restriction of movement (ROM) upon arrival. Members arriving from inside the state of Texas should expect similar ROM measures.

The type of ROM students will be placed in is at the discretion of the 47 STUS/CC with inputs provided by 47 MDG Public Health.

Members placed in quarantine will be added to the Admissions Flight slack chat. The 47 STUS operates a CUEOC (Combined Uber Eats Operations Center) that has several drivers that will pick up curbside orders at HEB or Walmart for quarantined members. More details on this program will be provided in your initial phone call to the Admissions Flight SDO office.



WELCOME TO SUPT AT LAUGHLIN

"Building combat-ready Airmen, leaders and pilots"



THE OPPORTUNITY OF A LIFETIME

Congratulations on your selection to attend Undergraduate Pilot Training at Laughlin AFB! Over the next few months of your life, you will be pushed harder and further than ever before. Our expert team of professional Instructors work tirelessly to provide you with a combat aviation education unmatched by any other nation on Earth. Every member assigned to Laughlin is seamlessly integrated into what's known as Team XL, and together we produce the world's most lethal and capable leaders and pilots.

While your road to wings may have started a long time ago, your journey through the forge of combat aviation begins today!

SECTIONS:

- The Road to Wings
- What to do
- What to bring
- Where to go
- FAQs



THE ROAD TO WINGS

Awaiting Pilot Training (APT) - Upon arrival to Laughlin you'll be placed into "APT status". You'll be assigned to Admissions Flight to complete your pre-requisites prior to starting UPT and will be enrolled in a course to teach you the keys to success for your next year in training.

Phase 1 - On your class start date, referred to as "Day 1", you'll be placed into T-6 Academics. Here you'll learn the systems and practice implementing your new found knowledge in simulators under a variety of mission sets.

Phase 2 - You'll hit the T-6 flightline on day 1 of phase 2. Here you'll learn fundamentals of flight, navigation, and formation. Each section has its own checkride, and towards the end you'll "vector" to Mobility, Rotary or Fighter/Bombers.

Phase 3 - The final phase of UPT. Here you'll learn Mobility or Fighter/Bomber fundamentals and further hone your skills as an aviator. Your final flight command team will help determine what Major Weapon System (MWS) you'll be selected for next!

Graduation - After completion of the UPT syllabus and your graduation ceremony, you'll be assigned to Graduation flight. Here you'll finish your outprocessing and attend any required training prior to departing to your MWS.

WHAT TO DO: LAUGHLIN-BOUND CASUALS

Until your orders are cut to depart your assigned base and unit, you will not officially be a part of the mighty 47th STUS. However, in an effort to ease your transition to UPT and enhance the flow of information, we'll add you to our casual Slack chat group while you wait to depart the fix.

Upon arrival, you'll be in-processed into the squadron and moved to our official Slack chat.

For issues pertaining to finance, housing, orders and class dates please work with your assigned local unit. We can only function in an advisory capacity until you are gained into our squadron!



HOW TO GET YOUR FLIGHT EQUIPMENT

BEGIN THIS PROCESS NO LATER THAN 60 DAYS
PRIOR TO YOUR IFT COURSE START DATE!

1. Send an email to 47oss.osteus.af.mil with your assigned squadron's official mailing address, IFT start date, anticipated date of arrival to Laughlin, and sizes for the following uniform items:

- Flight suit
- Flight jacket
- Flight rated boots
- Flight gloves
- Thermal underwear

2. Our equipment section will package your items and ship to your squadron address via official DOD mail. Most packages will arrive in 7 business days.

WHAT TO DO: 14 DAYS BEFORE ARRIVING

- Call the Front Desk and order your patches. (830) 298-8353
- Call the Admissions Flight SDOs and let them know your anticipated arrival date. (830) 298-5211
- Assemble required documents (see next page)
- Optional: Call the Laughlin Manor Air Force Inn (up to 90 days prior) to reserve a room. Per the JTR, up to 10 days are reimbursable. (830) 298-5731



WHAT TO DO: UPON ARRIVAL

1. Check in to your room at the Laughlin Manor (no uniform required)
2. Call Admissions Flight SDO shop BEFORE ENTERING ANY LAUGHLIN FACILITY to get answer COVID screening questionnaire. (830) 298-5211
3. Check in to the STUS CSS Office between 0800-1500 M-F wearing OCPs (see map page)
4. Check in to the Admissions Flight office between 0800-1600 M-F wearing OCPs (see map page)
5. Check into the Dorm Manager office at building 446 room 114 0800-1600 M-F wearing OCPs (830) 298-5903 or 5904

WHAT TO BRING



- 20 copies of your orders (include ALL pages)
- Driver's license and DOD CAC
- Print out of most current Fitness Assessment
- Car Registration, insurance and title
- Medical, shot, and dental records
- Know your blood type (for dog tags)
- TMO paperwork for your household goods
- All uniform items
- All personnel records
- Marriage certificate
- Savings to live on until finance starts your pay



Which uniform items?

- OCPs (recommend 2 sets)
- Short sleeve blues (complete set)
- Service dress (complete set with updated ribbons)
- PTUs (recommend 2 sets)

WHAT TO BRING



A place to rest

Laughlin AFB boasts a large dormitory complex for Students attending pilot training. The dorms come equipped with all of the essentials required for everyday life. Full kitchen with stove, full sized refrigerator, and microwave. Individual bathrooms in each room, and Full XL sized mattresses. (Queen sheets fit perfectly) Students must bring their own linens and cooking utensils.

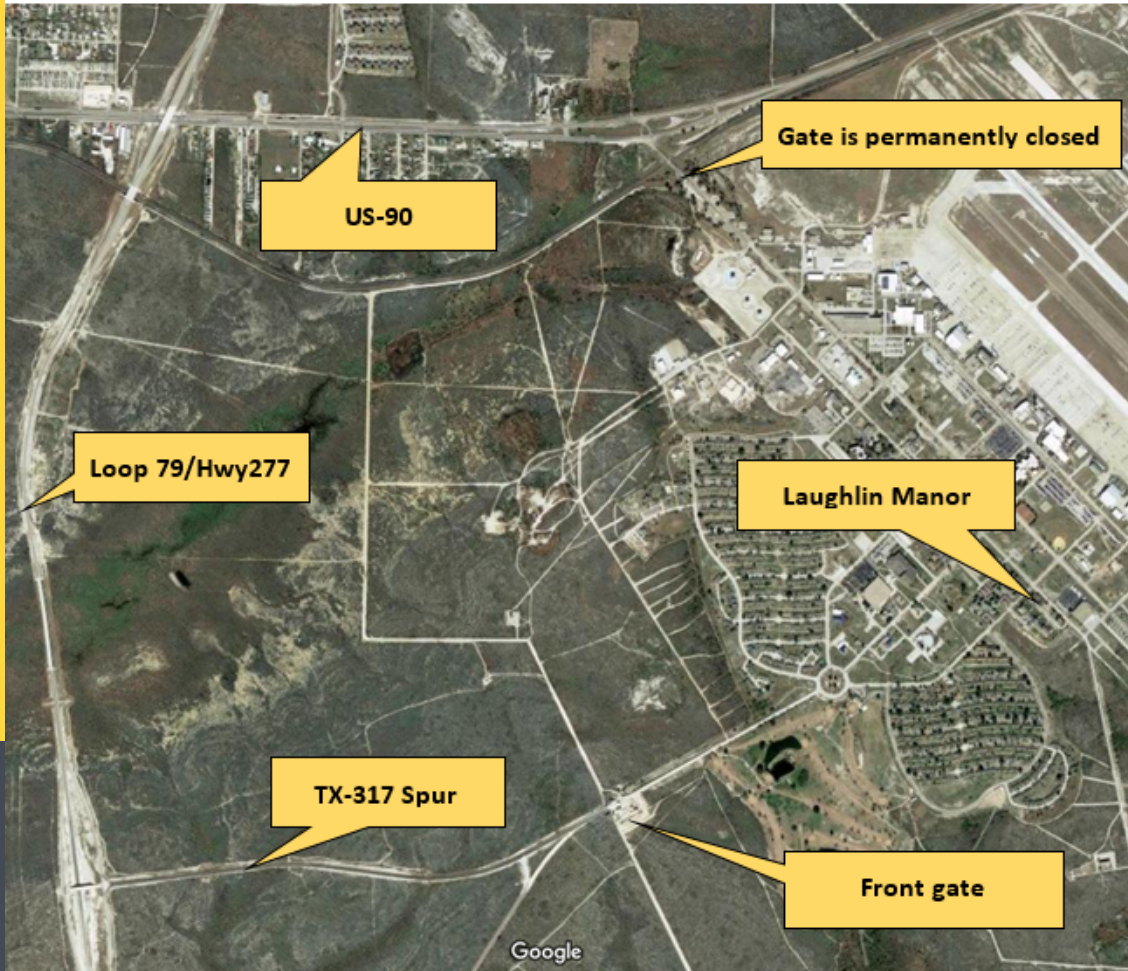


Fit to fight

All students attending pilot training must have a passing physical fitness assessment before beginning training.

Additionally, expect to take a mock-PFA while assigned to Admissions Flight.

WHERE TO GO



Getting to Laughlin

Getting to Laughlin can be tricky. Currently all GPS navigation will take you to the old gate on the north side of the base. This gate was closed several years ago.

To gain access to the base, take US-90 over to Loop 79 and head south to TX-317 Spur.

Follow this road to the front gate. You'll need your orders and CAC to gain entrance.

Once through the gate, take the first exit through the traffic circle onto Arnold Blvd, the Laughlin Manor will be on your right.

WHERE TO GO



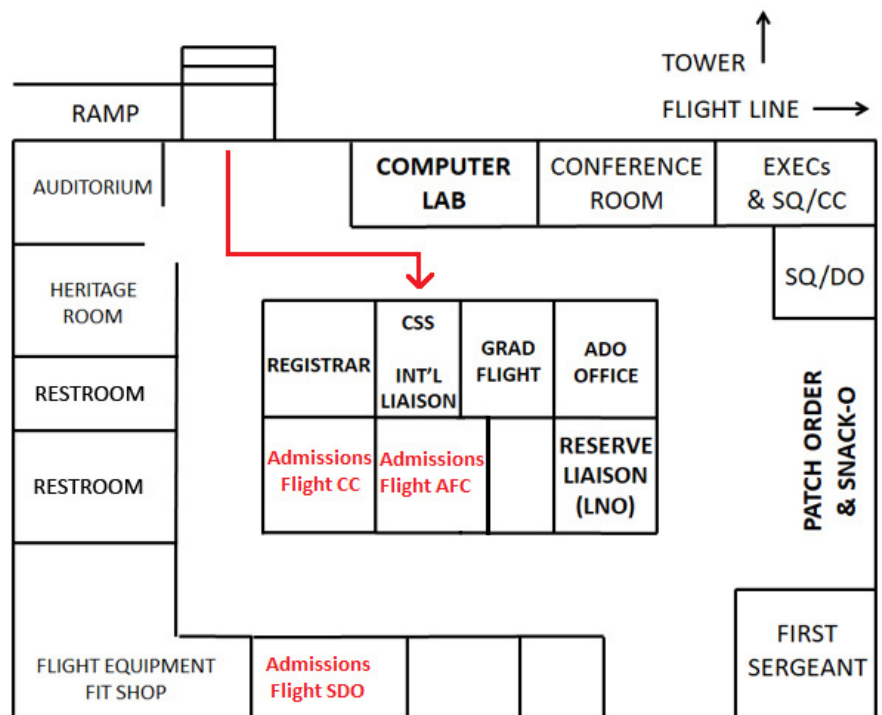
FINDING THE 47TH STUS

The 47th Student Squadron is located on the northwest corner of building 320. It sits adjacent to the control tower. Please be sure to park in the designated parking lot.

SQUADRON MAP

Once inside, your first stop will be the CSS office. They will gain you into the squadron and this will prevent you from showing as AWOL in the system.

After CSS gives you your in-processing checklist, immediately check in to the Admissions Flight SDO shop.



FREQUENTLY ASKED QUESTIONS: SINGLE AND UNACCOMPANIED OFFICERS

Do I have to live in a dorm? Yes. All unaccompanied officers will live in a dorm. Certain opportunities to get a waiver may come up when the dorm is at capacity, but that is very rare.

Are the dorms furnished? Yes. The dorms include a bed, full kitchen, desk, dresser, nightstand, table and chairs, and individual bathroom.

Are there laundry facilities to use in the dorms? Yes. Each dorm building has a free laundry facility.

What do I do with all of my household goods? If you have household goods, the USAF will place them into long-term storage while you are here at no cost to you.

What if I have a pet? You will be responsible for making arrangements for the boarding of your pet during your stay.

What if I have a firearm? Members who live in the dorm are required to store their firearms in the armory. Space is limited, so please avoid bringing an excessive amount with you.

FREQUENTLY ASKED QUESTIONS: MARRIED AND ACCOMPANIED OFFICERS

Do we have to live in a dorm? No. Married and accompanied officers are not authorized to live in the dorms. You must still check in with the dorm manager, but will be referred to live either in Laughlin Family Housing or off-base.

What if my spouse or dependent aren't on my orders? If your spouse or dependent aren't on your PCS orders to Laughlin, then you are considered unaccompanied and will need to refer to the previous page. Highly recommend making sure they are on your orders!

Does Laughlin Family Housing allow pets? Yes! Please refer to Laughlin Family Housing's website for more details.
<https://www.laughlinfamilyhousing.com/>
(830) 298-1701

What if I'm going to be getting married really soon? Am I still considered single? You'll have to live in the dorm initially. Once you have a date of the ceremony solidified, you may apply for a waiver for intent to marry no earlier than 60 days prior to the signing of the marriage certificate. Once the waiver is approved, which may take up to 14 calendar days, you may speak to the dorm manager about moving into housing of your choice (as above).



PARTING SHOTS

Pilot training is one of the most challenging programs most officers will experience in their entire time in the USAF. The lessons learned during your time here will shape the future of our nation and how we project power across the globe.

Earning your wings is just the first step in your journey to ascend the ranks of the most elite fighting force the world has ever seen. Relish every moment, take as much in as possible, and remember: you only get to do this once. So make it count!



“
"SUCCESS IS NO
ACCIDENT. IT IS HARD
WORK, LEARNING,
STUDYING, SACRIFICE
AND MOST OF ALL, A
LOVE OF WHAT YOU
ARE DOING"

